

Wisconsin Sharp-tailed Grouse Management Plan

January 2023

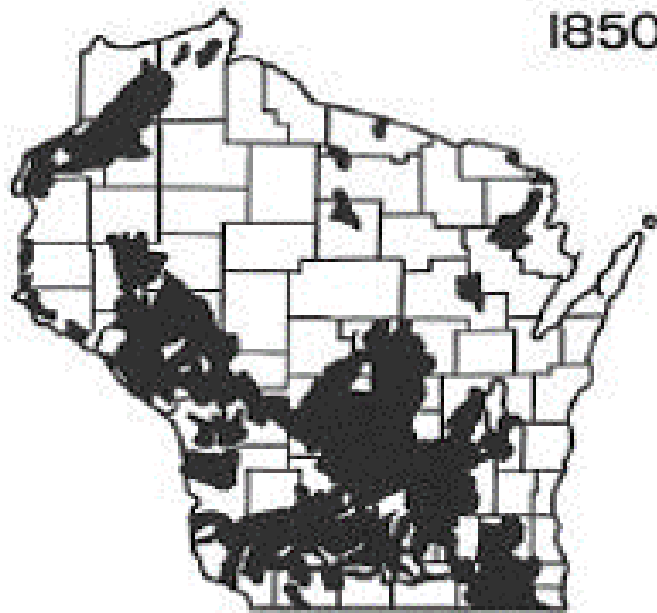
Prepared by:

Sharp-tailed Grouse Management Team

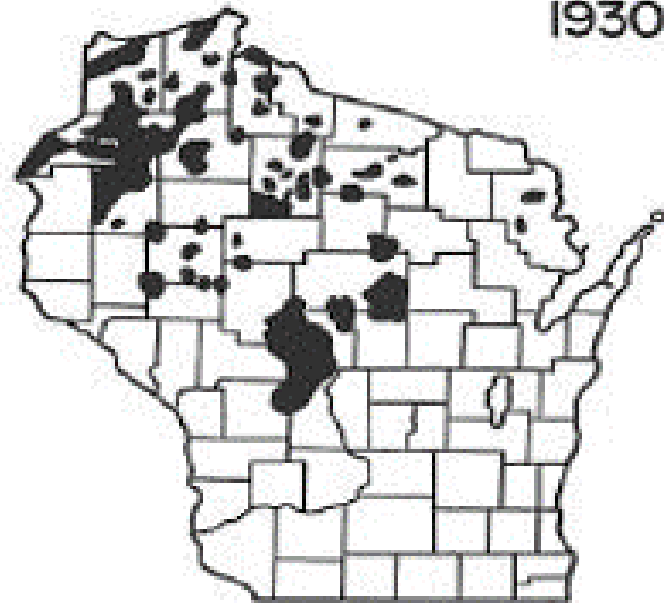
Wisconsin Department of Natural Resources



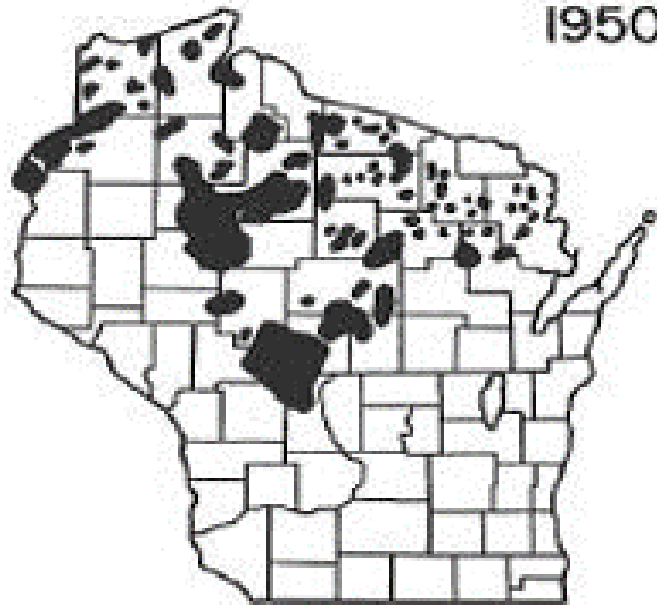
1850



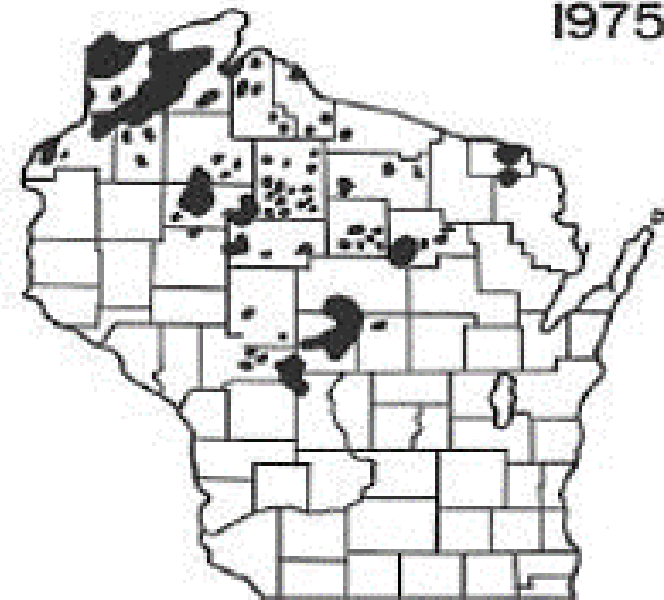
1930



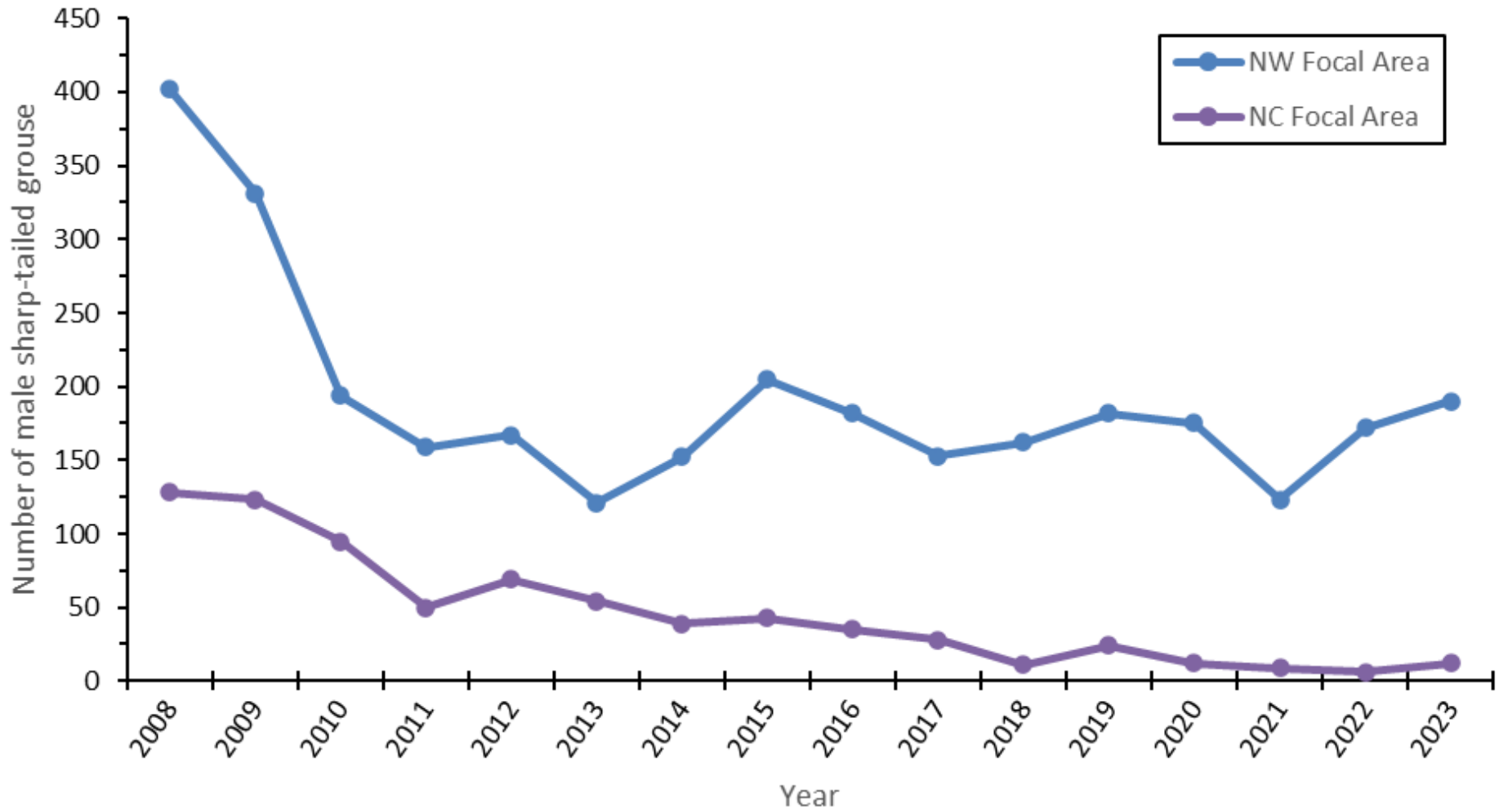
1950

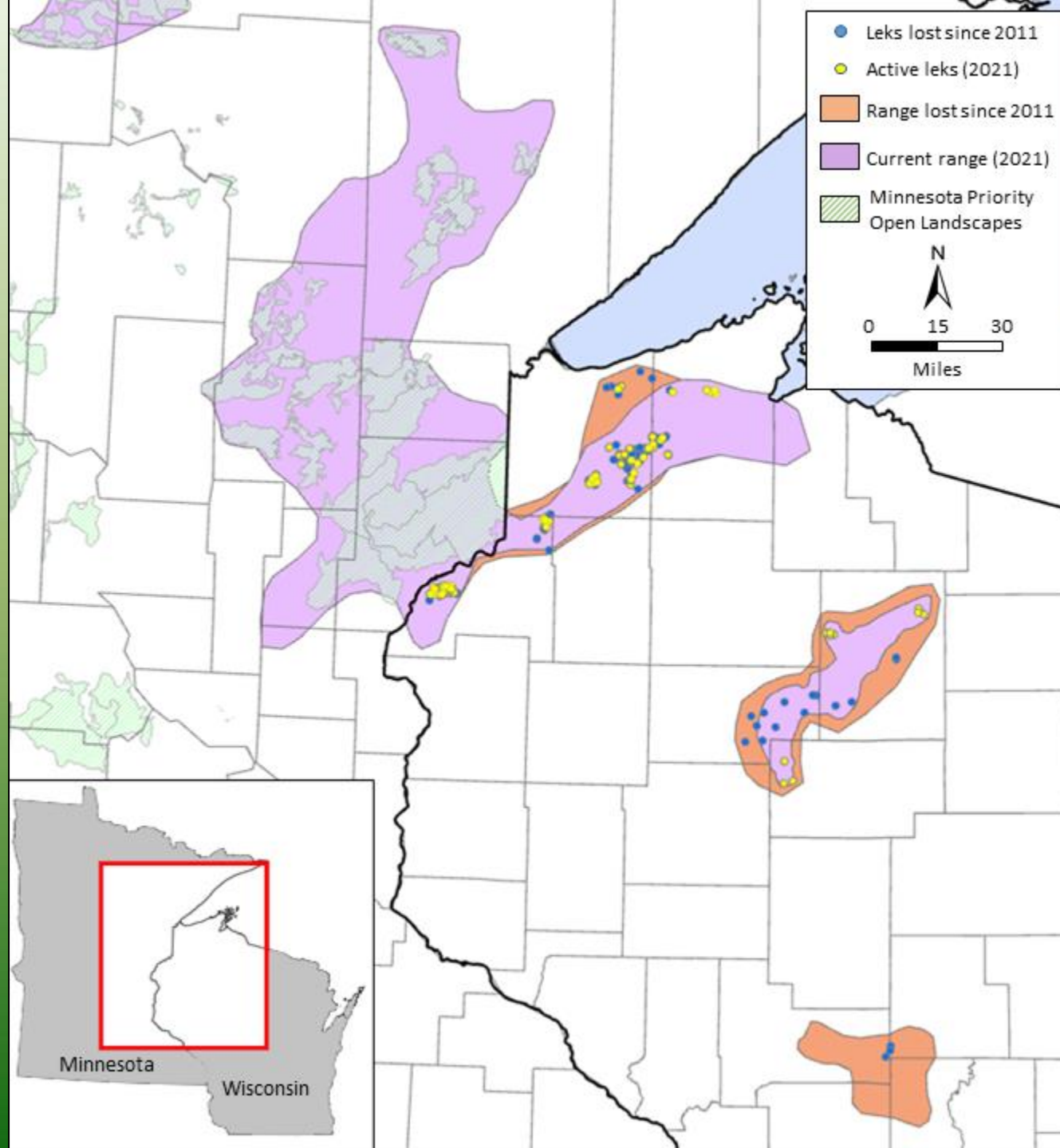


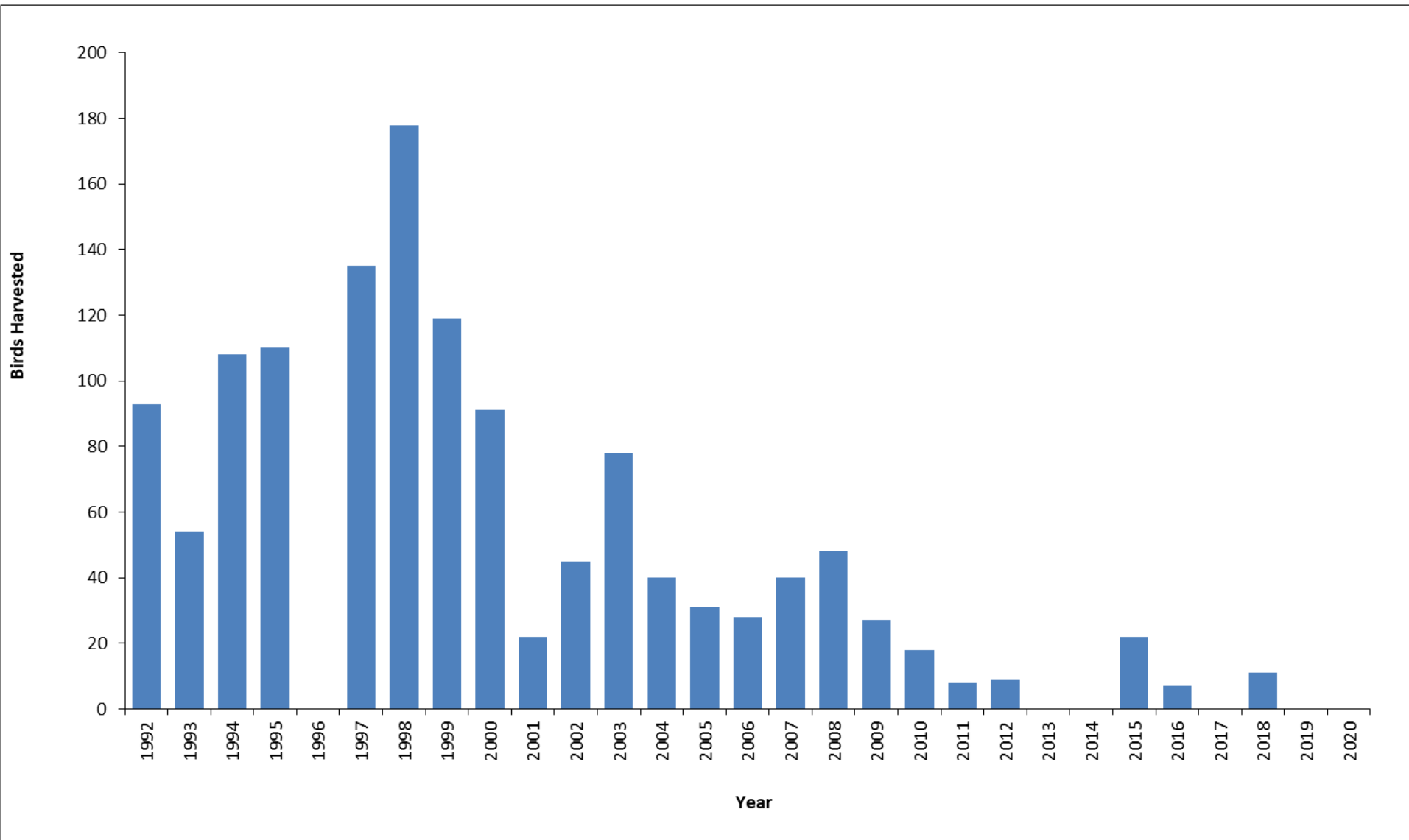
1975



NW Focal Area and NC Focal Area







STGR Count-Based PVA

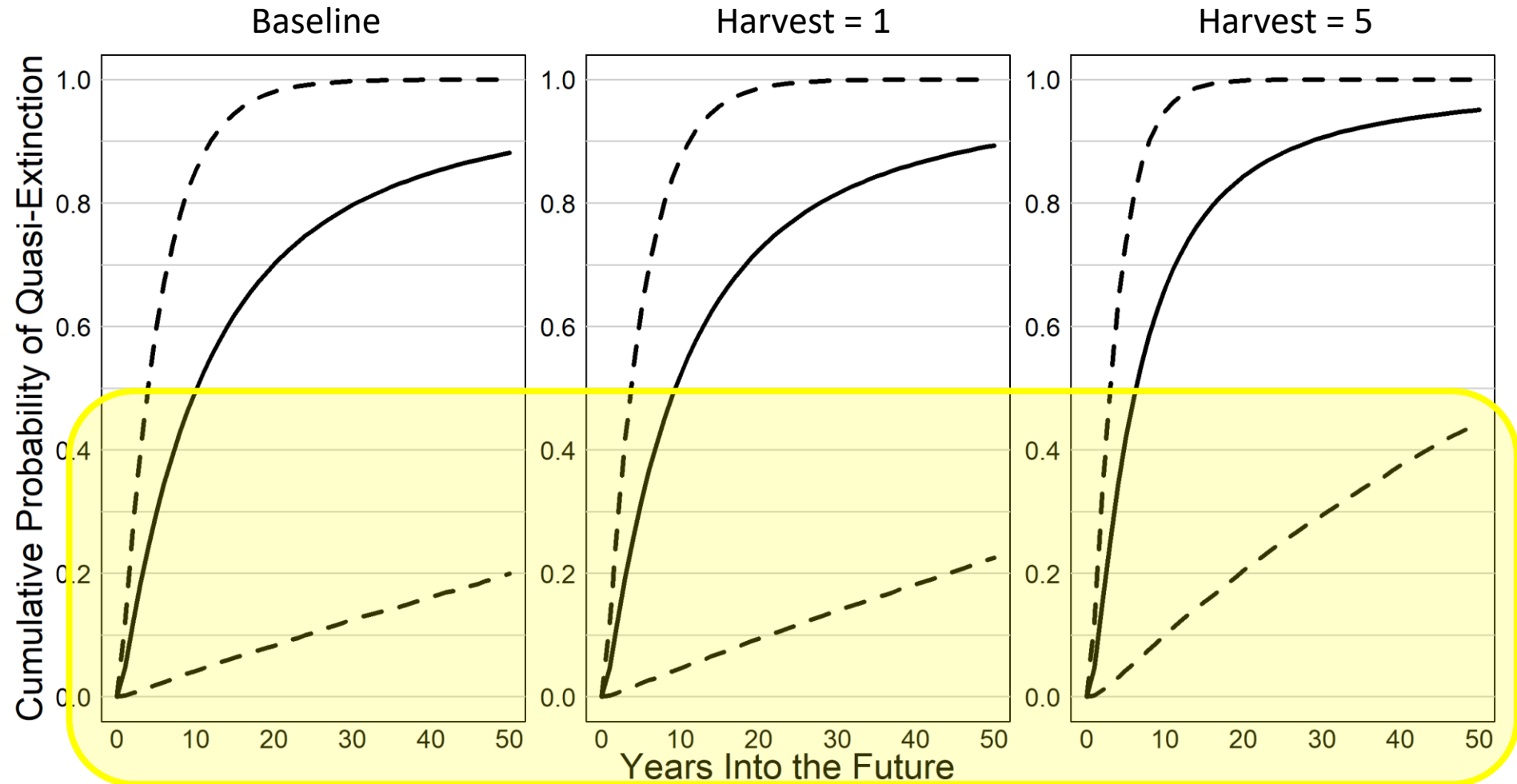
Table 1. Sharp-tailed Grouse Population Trends on Managed Lands from 1991-2013.

Property	1991	1992	1993	1994	1995	1996	1997	1998	1999	2000	2001	2002	2003	2004	2005	2006	2007	2008	2009	2010	2011	2012	2013
Crex Meadows W.A.	126	47	53	57	86	110	117	132	111	112	73	61	61	53	49	38	45	40	24	20	16	24	14
Douglas County W.A.	5	4	2	8	12	9	9	18	20	16	11	12	20	21	14	15	28	28	41	36	42	25	25
Kimberly Clark W.A.	56	32	20	20	28	20	15	25	40	39	5	9	4	n/a	0	3	9	10	10	11	n/a	8	n/a
Moquah Barrens W.M.A.	6	9	6	7	21	14	17	34	40	36	19	35	29	14	7	6	6	3	6	7	5	6	3
Namekagon Barrens W.A.	28	25	16	25	39	44	54	65	43	24	9	21	42	25	19	42	51	47	36	43	21	40	42
Pershing W.A.	37	34	24	16	26	30	43	34	22		19	13	3	16	11	16	28	27	20	14	9	3	7
Riley Lake W.M.A.	25	8	5	7	18	17	19	19	27	27	17	12	17	16	12	16	25	27	37	31	15	33	25
Wood County W.A.	54	13	11	16	19	18	10	17	18	6	0	8	n/a	n/a	n/a	n/a	n/a	n/a	n/a	n/a	n/a	n/a	n/a
Dike Seventeen	16	10	9	9	8	7	3	18	3	6	0	2	2	3	2	1	2	1	1	0	0	n/a	n/a
Total	353	182	146	165	257	269	287	362	325	284	159	173	178	148	114	137	194	183	175	162	108	139	116

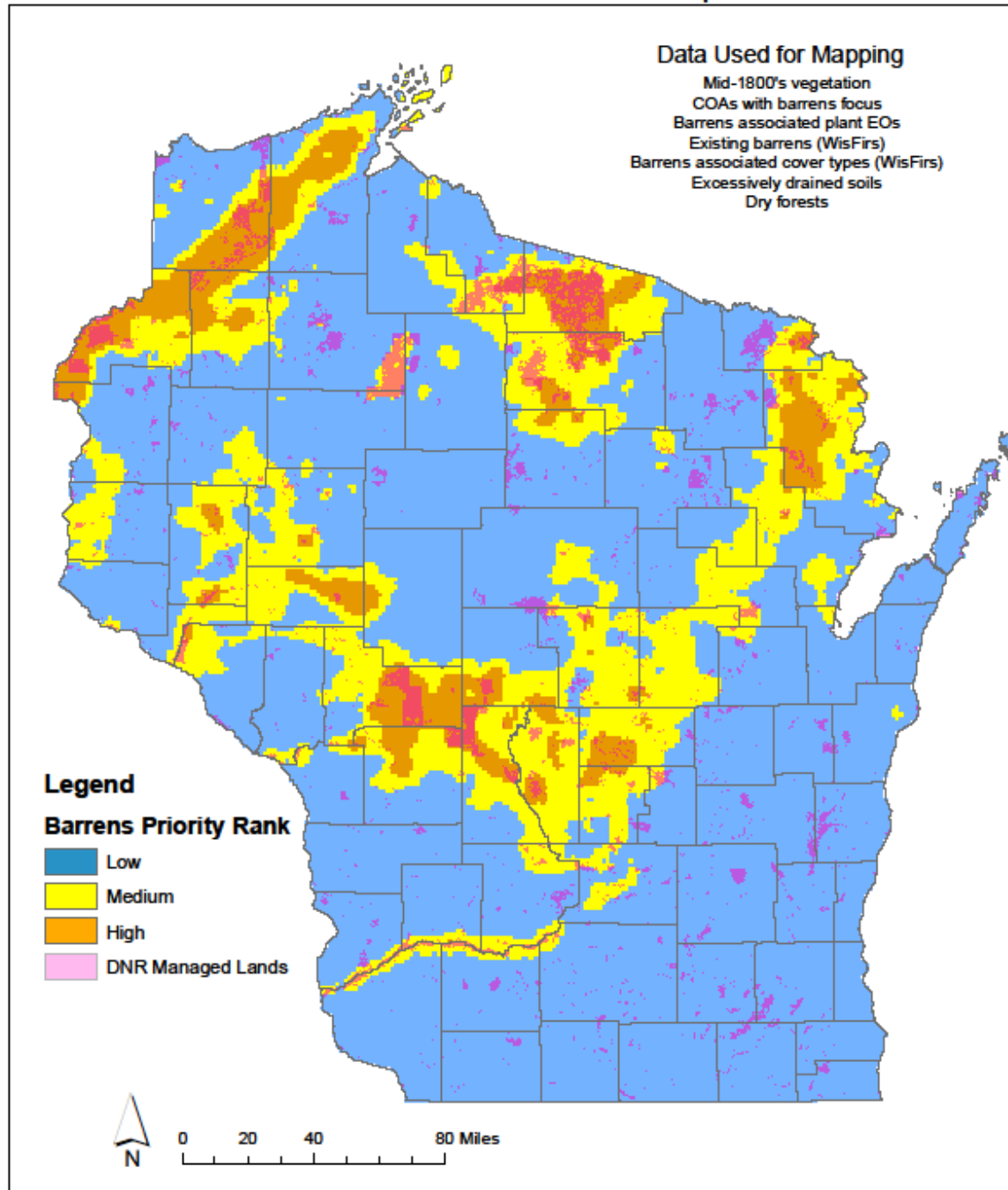
Table 1. The number of dancing males observed on Sharp-tailed Grouse Management Areas 2007-2017. *Barnes data were separated out for this table beginning in 2007 and first reported in this way beginning in 2014.

Managed Properties	2008	2009	2010	2011	2012	2013	2014	2015	2016	2017	2018
Crex Meadows WA	40	24	20	16	24	14	5	16	25	22	17
Douglas County WA	28	41	36	42	25	25	23	31	24	14	23
Kimberly Clark WA	10	10	11	n/a	8	n/a	3	4	6	0	0
Moquah Barrens WMA	3	6	7	5	6	3	4	3	2	10	15
Namekagon Barrens WA	47	36	43	21	40	42	56	81	62	47	44
Pershing WA	27	20	14	9	3	7	5	3	3	1	0
Riley Lake WMA	27	37	31	15	33	25	19	27	16	21	6
Barnes Barrens*	16	27	n/a	n/a	6	8	10	19	31	23	12
Total	198	201	162	108	145	124	125	184	169	138	117
% Change	42%	2%	-19%	-33%	34%	-14%	1%	47%	-8%	-18%	-15%

STGR PVA Overview



Barrens Prioritization Map







Upland Sandpiper



Sharp-tailed Grouse



Red Fox



Eastern Towhee

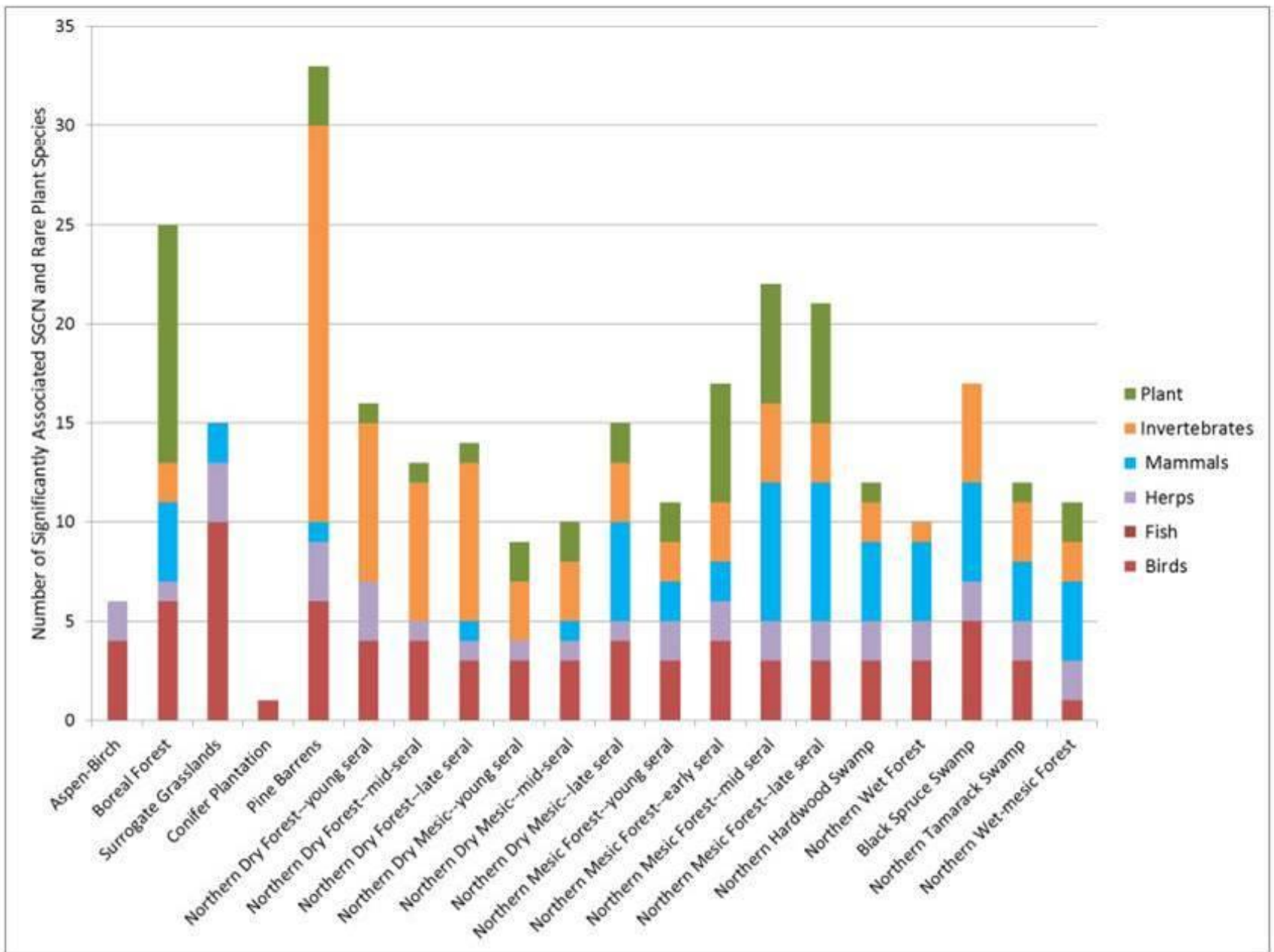
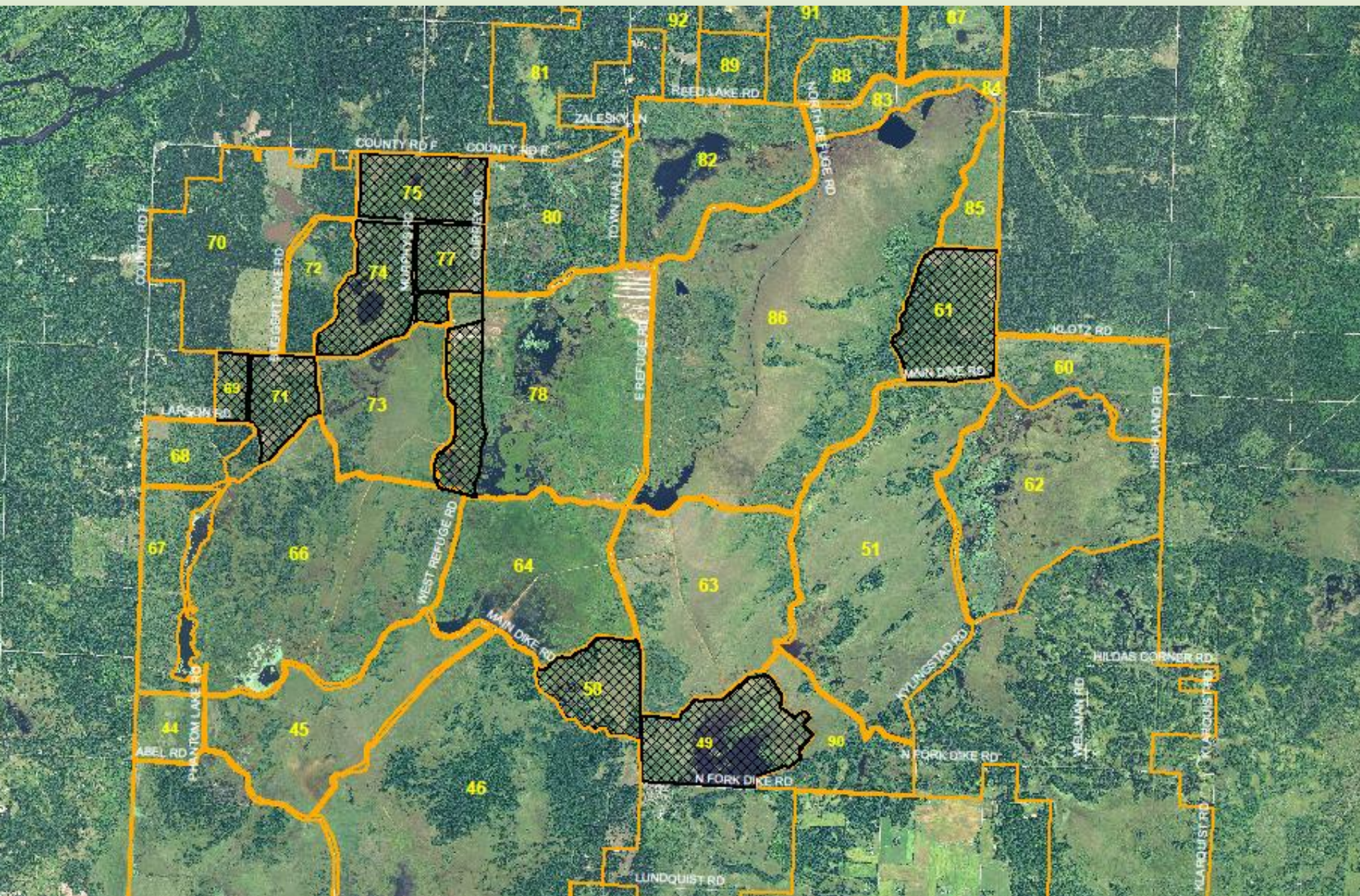
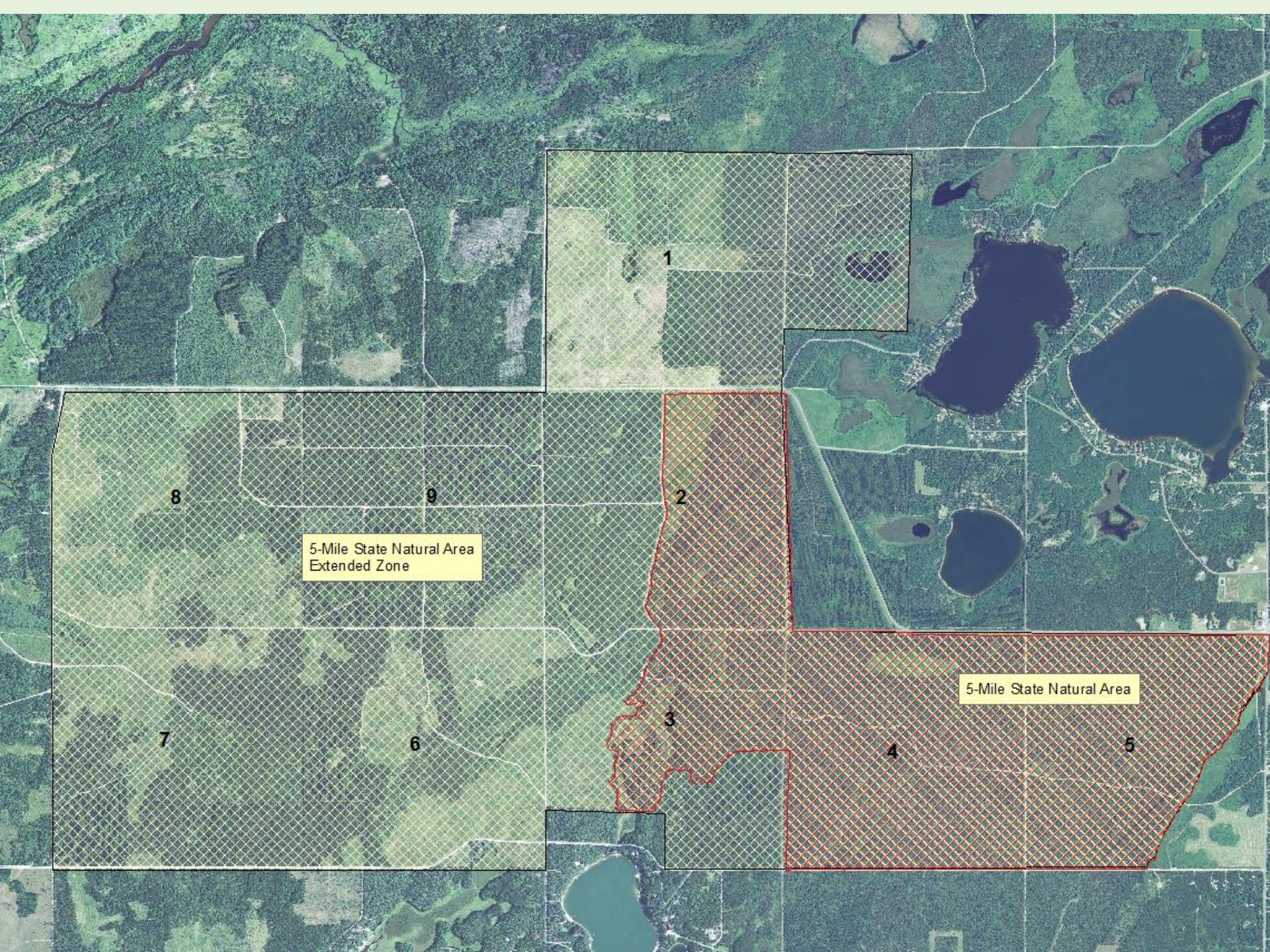


Figure 4. Number of SGCN and Rare Plant Species associated with Terrestrial and Forested Wetland Natural Communities of Conservation Significance on the Brule River State Forest (WDNR 2015d).¹





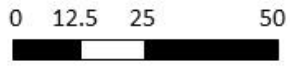
5-Mile State Natural Area
Extended Zone

5-Mile State Natural Area

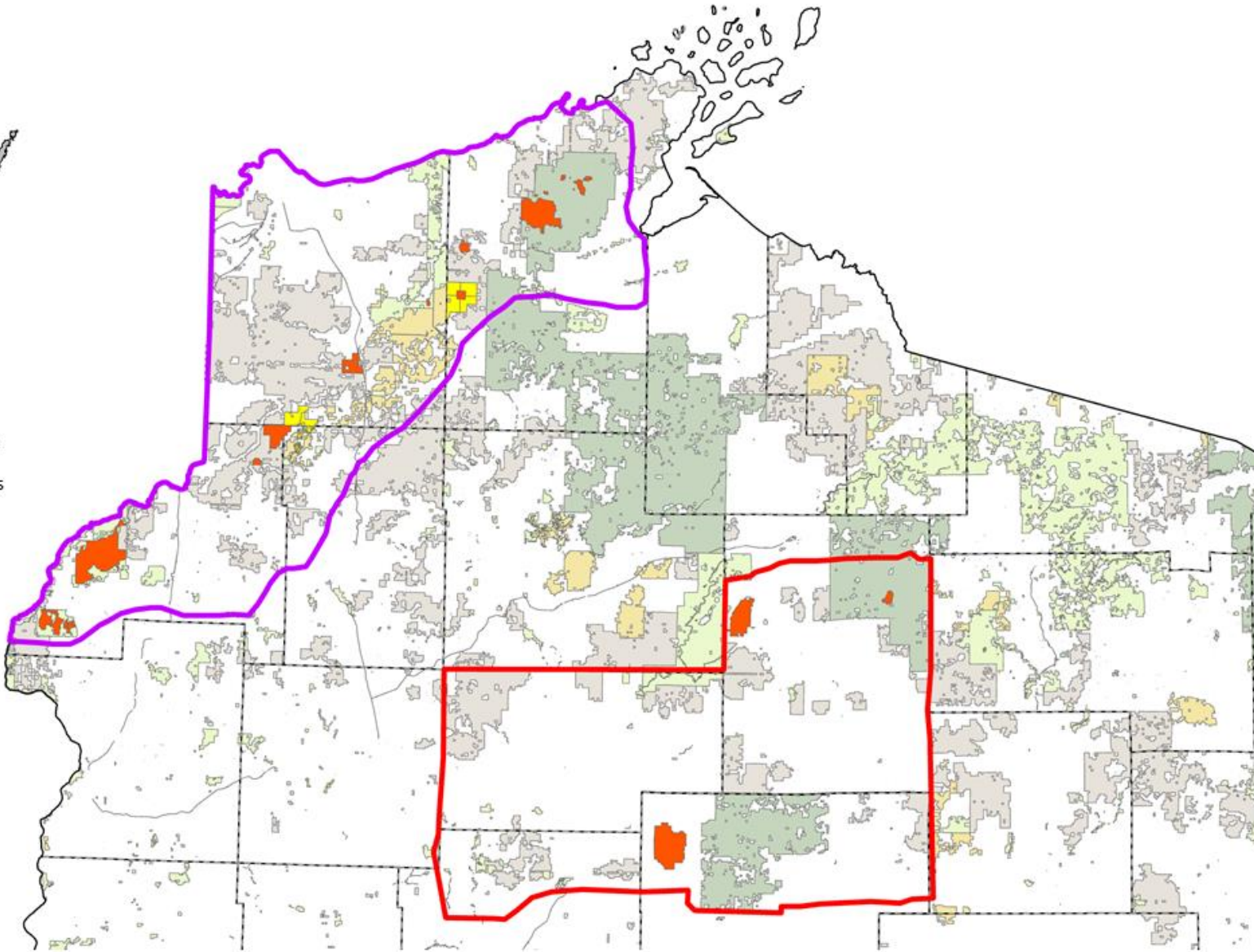




- Northwest Focal Area
- North Central Focal Area
- Core Management Areas
- Rolling Barrens Projects
- DNR Managed Lands
- Easements
- County Forests
- National Forests

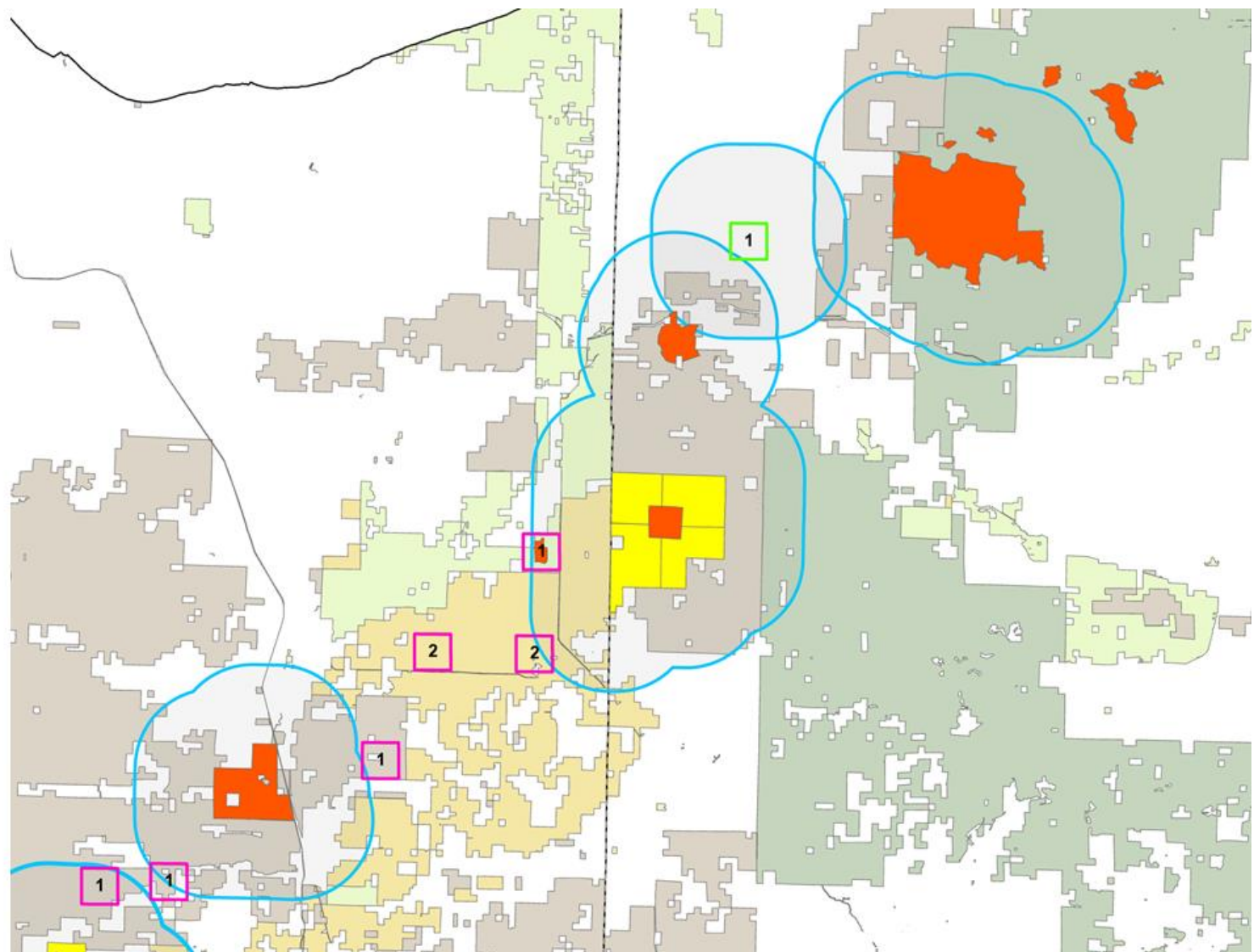
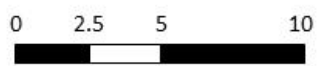


Miles



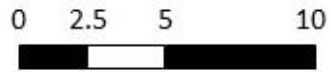


- Core Management Areas
- Rolling Barrens Projects
- DNR Managed Lands
- Easements
- County Forests
- National Forests
- Stepping Stone
- Private Lands Stepping Stone
- 5 km (3.1 mi) Buffer





-  Core Management Areas
-  Rolling Barrens Projects
-  DNR Managed Lands
-  Easements
-  County Forests
-  National Forests
-  1 Stepping Stone
-  1 Private Lands Stepping Stone
-  5-km (3.1 mi) Buffer



Miles

